



Metals That Power Our Future

Corporate Presentation

May 2026

Forward Looking Statements

Disclaimer

Neither the TSX Venture Exchange nor its Regulation Service Provider (as that term is defined in the policies of the TSX Venture Exchange) accepts responsibility for the adequacy or accuracy of this material.

This presentation may contain forward-looking statements including but not limited to comments regarding mineral resources and the timing and content of upcoming work programs, geological interpretations, receipt of property titles, potential mineral recovery processes, etc. Forward-looking statements address future events and conditions and therefore, involve inherent risks and uncertainties. Actual results may differ materially from those currently anticipated in such statements. The Company does not undertake to update any forward looking information in this presentation or other communications unless required by law.

Qualified Person

The technical information in this corporate presentation was reviewed and approved by Coniagas CEO Frank Basa, P.Eng. Ontario, who is a Qualified Person in accordance with National Instrument 43-101.

The technical data on exploration results and potential target contained in this presentation have all been publicly disclosed in news releases issued since 2019 by Nord Precious Metals Mining Inc. (formerly Canada Silver Cobalt Works Inc.) which was the previous operator of Graal. The technical data was also included in the report published in January 2024, entitled, NI 43-101 Technical Report Graal Nickel & Copper Project, Saguenay-Lac-St-Jean Quebec, Canada, dated: January 17, 2024, prepared by Claude Duplessis P.Eng. GoldMinds Geoservices Inc. and Hugues Gu erin Tremblay P.Geo. Laurentia Exploration Inc., both qualified persons in accordance with National Instrument 43-101.

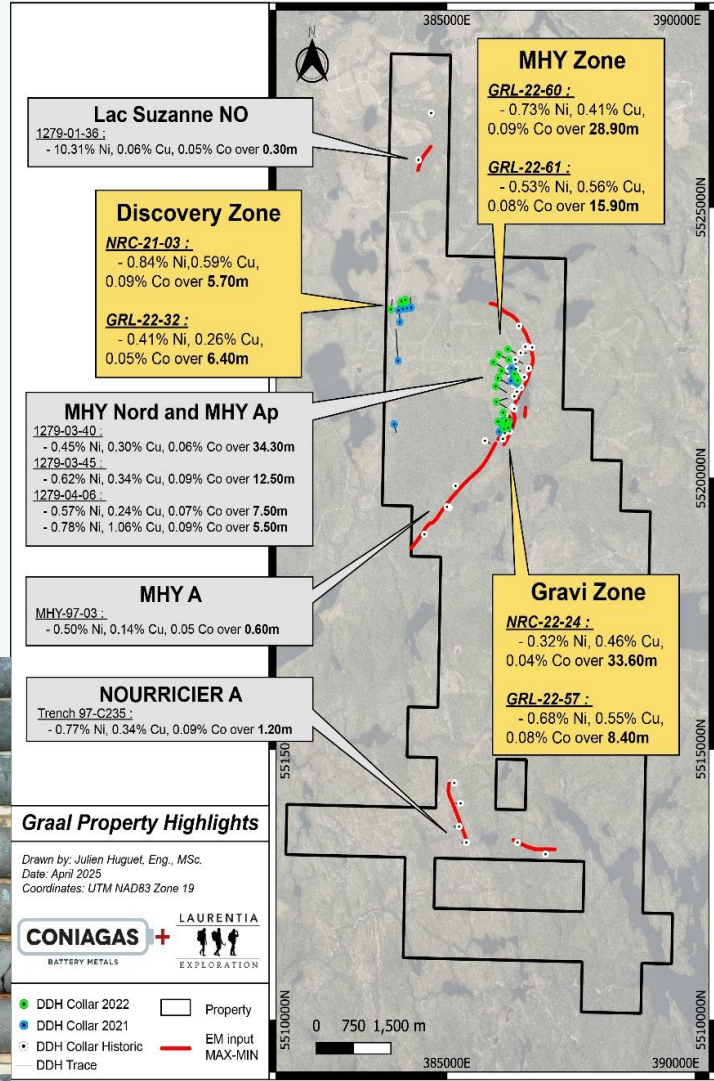
Graal Property

Large, **High-Grade Nickel and Copper Deposit** on a recently expanded 14,837 hectares with byproducts of Cobalt, Platinum, Palladium

Three Prospective Zones – MHY, Gravi, Discovery

Many drill intersections of **massive sulphides**

Excellent grades over wide widths, up to 28.9 metres; mostly 50-100 metres below the surface



Well-connected, easily accessible

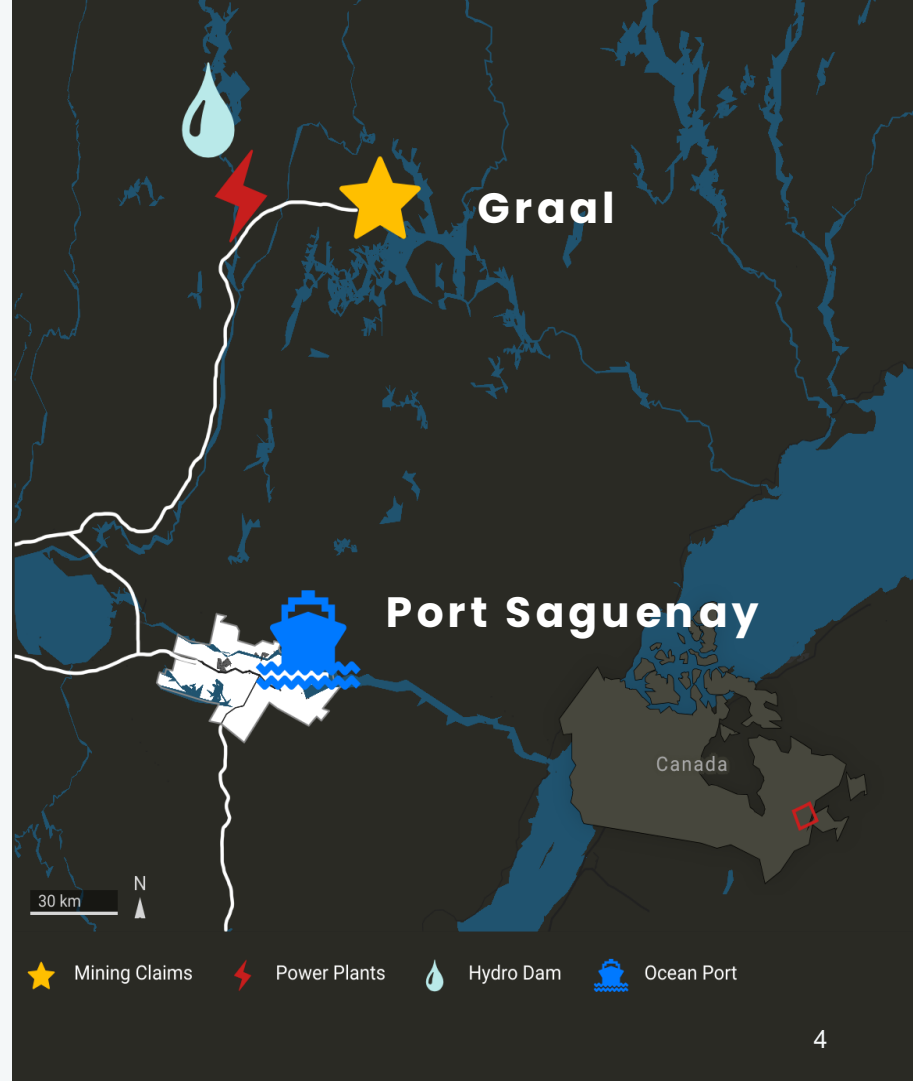
Location

Quebec-based property

Ideally located:

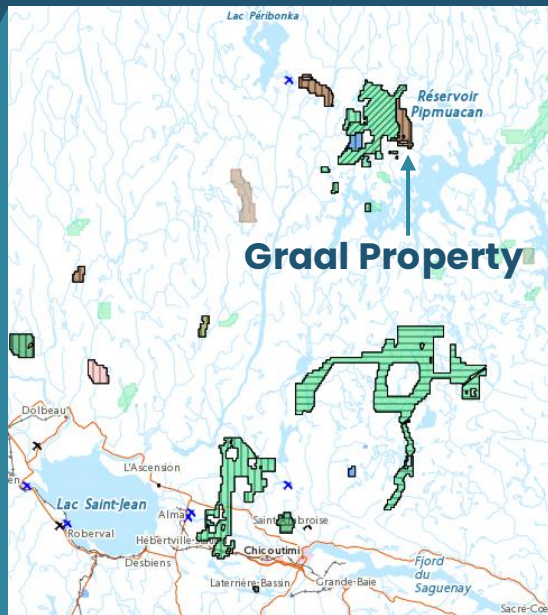
- **Road access**
- **Close to hydro power**
- **Mining infrastructure**
- **Ocean port**

On path to becoming **low-carbon** open-pit mine supplying critical metals to rapidly expanding EV market

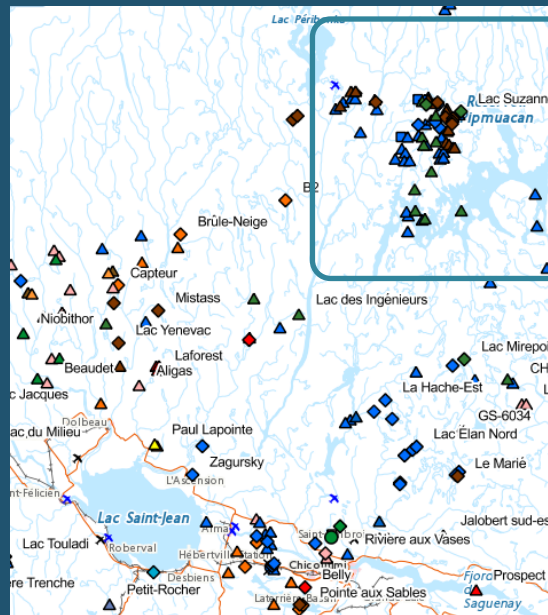


Coniagas Graal Property Location

Resource Rich Area



Exploration Properties



Metallic Deposits

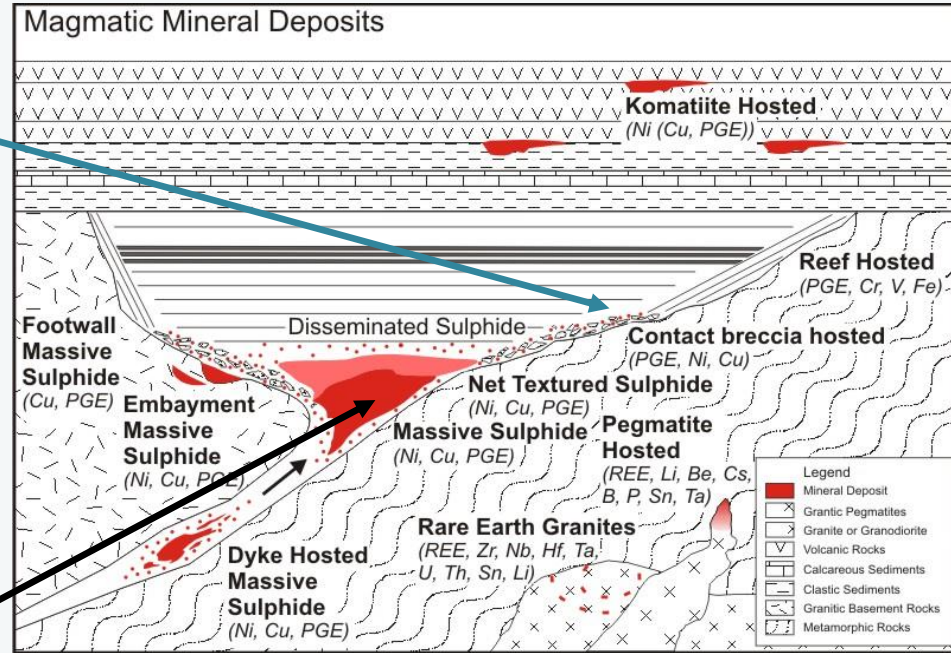
Nickel
Copper
Cobalt
Iron
Titanium

Conceptual Model

The mostly shallow drilling has been on the edge of a large Bouguer gravity bowl with the likelihood of a significant deposit at depth near the bottom of the large gravity bowl

We believe we are here

We want to get there



HTDEM Results

Property **more than doubled** to **148 km² (14,837 ha)** following new staking of 8,724 hectares

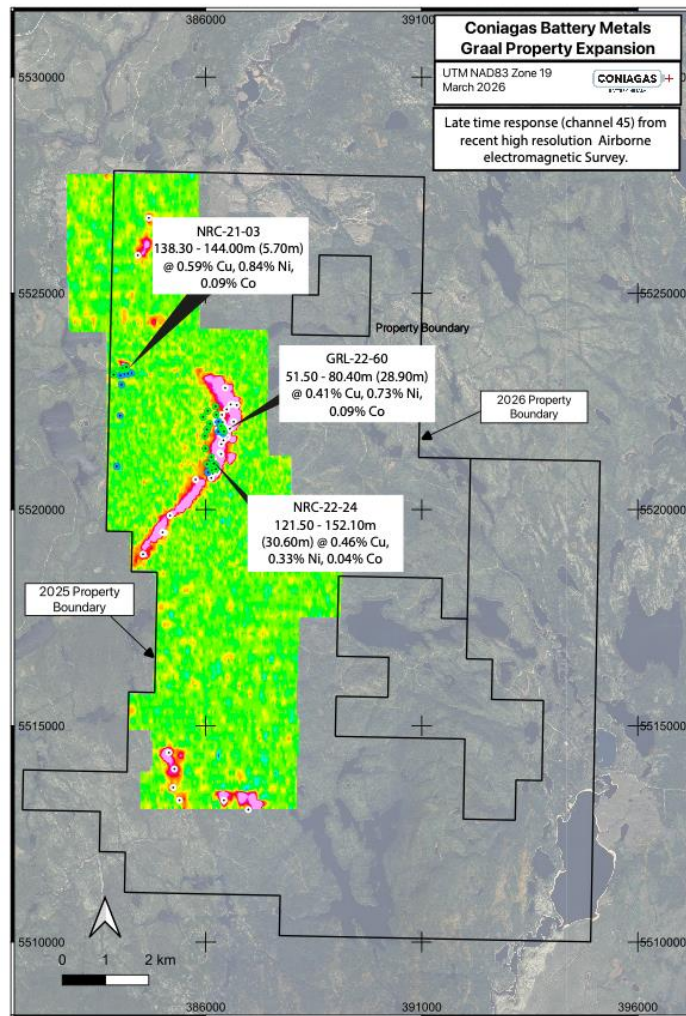
468 line-km HTDEM survey at 200 m spacing (100 m over known zones)

EM confirms bowl-shaped massive sulphide target

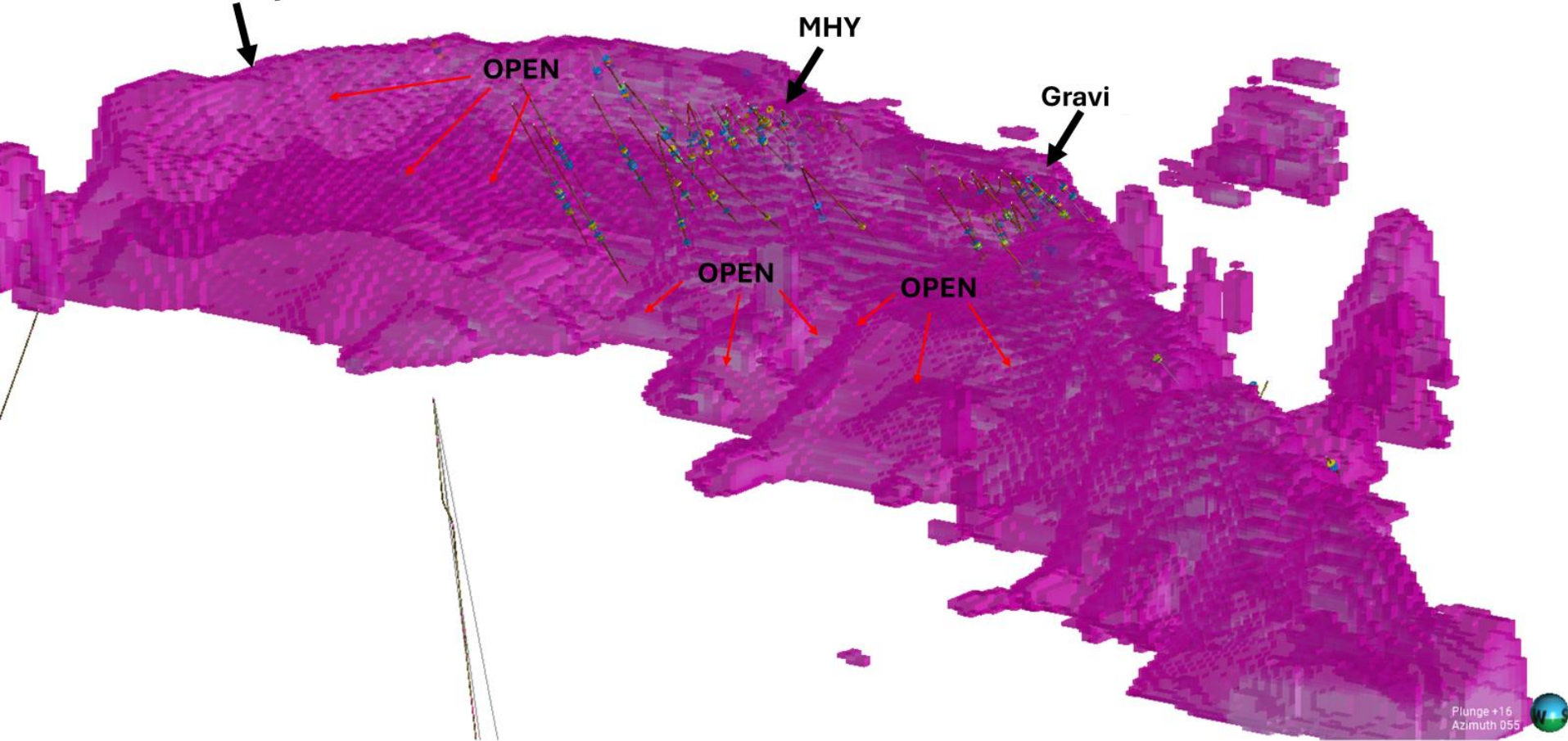
Mineralisation dips **toward centre**, open at depth at MHY-Gravi zones

Targets defined: **Lac Suzanne-NO, Nourricier A & B** plus isolated untested anomalies

Advancing toward **maiden mineral resource estimate** with refined drill targets



Graal conductivity inversion



1 km

Windfall Geotek

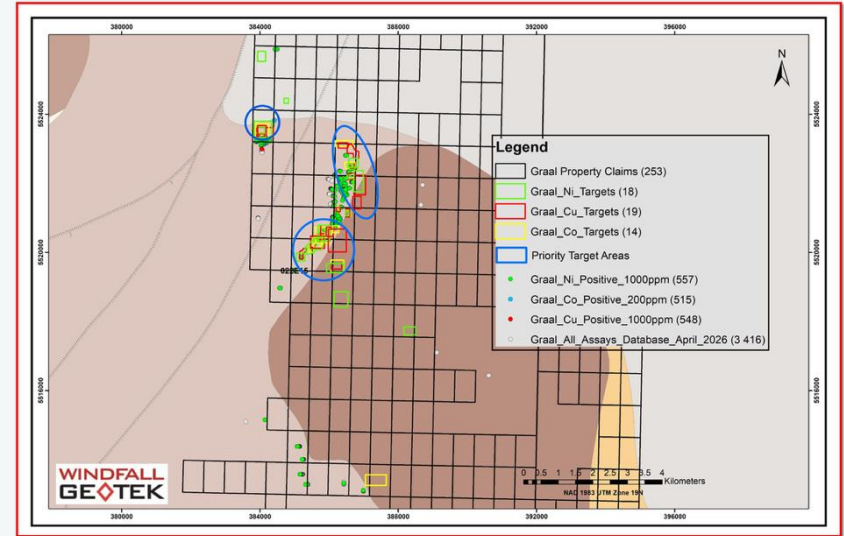
Independent AI Validation – Windfall Geotek ran **4 independent models** using 640+ variables (mag, gravity, EM, topography) with 3,400+ Ni-Cu-Co assays as training data

Triple-Metal Convergence:

- **3 priority zones** where all 4 models flag Ni + Cu + Co simultaneously at 80–90% similarity
- **18 Ni, 19 Cu & 14 Co targets** generated – confirming known trend plus extensions
- Targets **offset from existing drill holes** yet on-trend – untested ground, identical signatures

Windfall Geotek Track Record:

- **>85% base metal success rate** over 21 years
- pure data-driven ML that cannot fabricate patterns



A Proven Technology



Next Steps

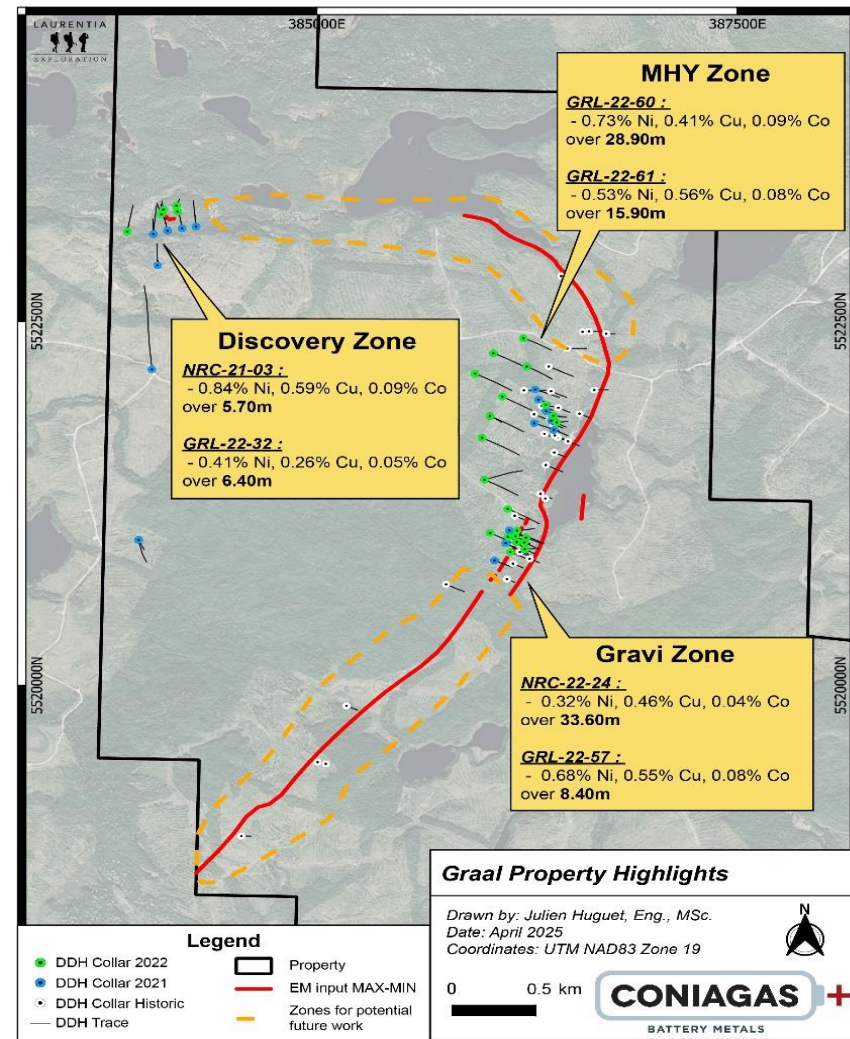
Geophysics & Drilling – to follow up on 16,000m past drilling by Coniagas and 6,000m by SOQUEM, Virginia Mines

Exploration Focus:

- Expand Known Zones along 6 km strike length **(red line)**
- Test between MHY and Discovery **(Dotted orange lines)**

Use property-wide **airborne mag-EM survey** and **Windfall Geotek data** to inform targets – then **9,500m drilling**

Geologists' scenario – **A large, low-grade starter pit** – that evolves to higher-grade underground mining

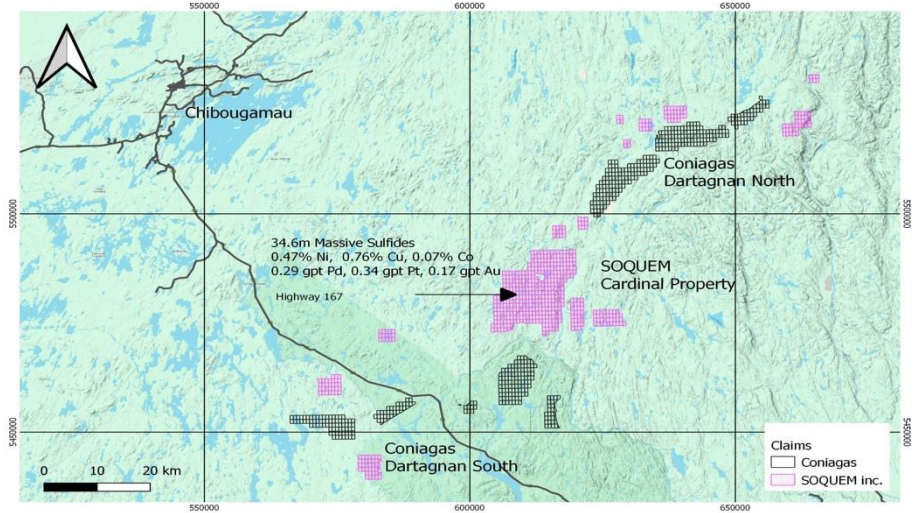
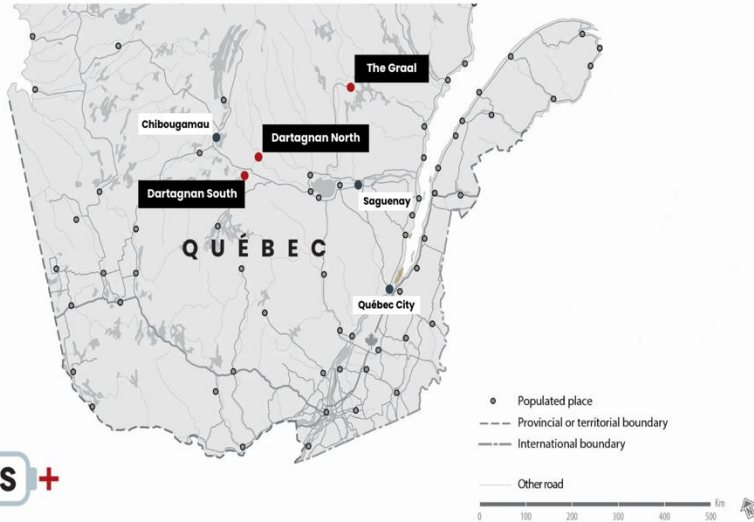


Planned 2026 Exploration Program

Drilling to better define the Graal Deposit and work towards a maiden 43-101 resource estimate in 2027

Planned Budget (\$3.5 million)	Estimated Cost
Phase 1: Shallow infill drilling to better define mineralization at MHY, Discovery and Gravity Zones (6,475m in 44 holes)	\$ 2,100,000
Phase 2: Deeper drilling south of the Discovery Zone (1 hole to 1,250m)	\$ 400,000
Phase 3: Shallow step-out drilling to extend known mineralization using recent high-resolution airborne EM survey results (1,775m in 13 holes)	\$ 500,000
Metallurgical work and G&A	\$ 500,000

D'Artagnan Claims



Adjacent to SOQUEM Cardinal

28.3 km² (531 claims) staked adjacent to SOQUEM's Cardinal Property. Highway & logging road access, power corridor through D'Artagnan South. Same Grenville belt hosting SOQUEM's Ni-Cu-PGE system.

SOQUEM Drill Highlights

Richelieu Zone: 1.05% Cu, 0.75% Ni, 0.11% Co + PGEs over 11.65 m from 45.8 m (Nov 2024). Massive sulphide zone doubled to 450 m strike. New 800 m EM conductor 5 km south, same geophysical signature, open in all directions.

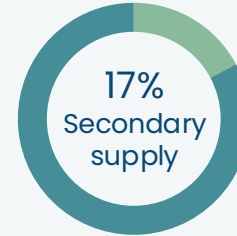
Growing Demand for Critical Metals

Requires Consideration of Supply Source and Supply Chain Risk



25,855 kt
Demand

28x
Demand growth



129.95
billion tonnes
tailings globally



3,104 kt
Demand

41x
Demand growth

61%
mining in
one country



5.65
billion tonnes
tailings globally



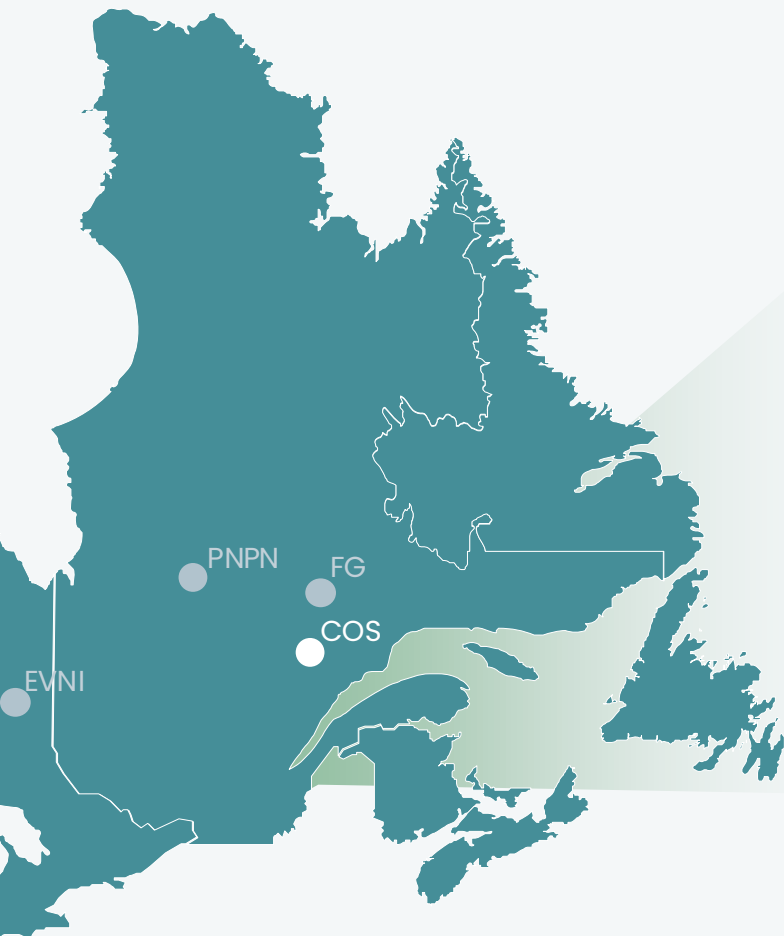
215 kt
Demand

21x
Demand growth

84%
mining in
one country



Peer Comparison



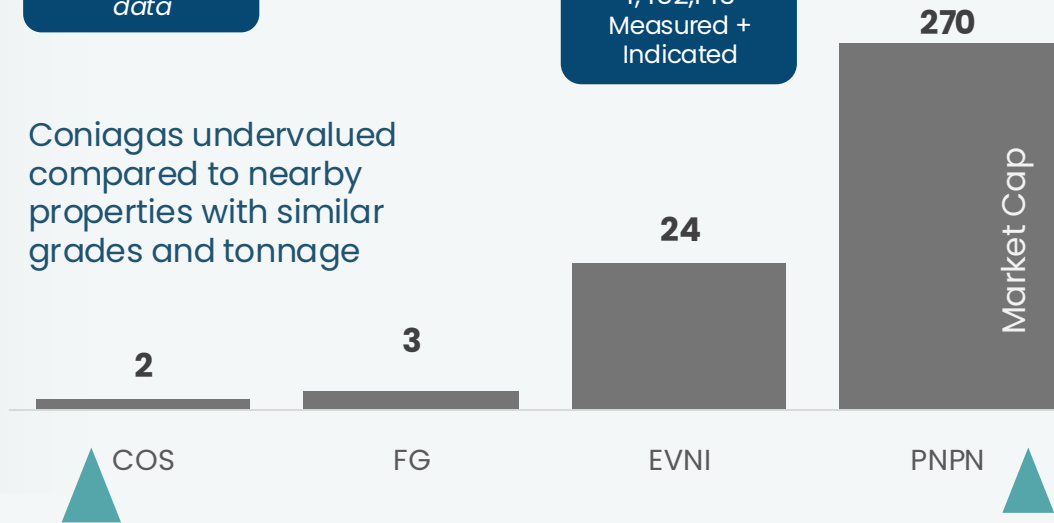
0.6-0.8% Ni
0.3-0.5% Cu
30-60m tn
Estimated, historic data

1.28% Ni
1.38% Cu
Grab sample

1.07% Ni
0.07% Cu
487,319tn Measured
1,452,143 Measured + Indicated

0.77% Ni
0.41% Cu
5,429,000tn Measured

Coniagas undervalued compared to nearby properties with similar grades and tonnage



Long term Value Creation

Minimal Acquisition Costs

Most of the Graal property was staked and only \$60,000 was paid to consolidate adjacent properties. Previous drilling results obtained essentially for free.

Productive Spend

\$6 million spent on geophysics and drilling demonstrated a large deposit, confirmed the deposit model, discovered new high-grade zones, and provided a strong basis for planning for expansion.



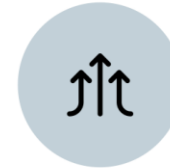
Expand near-surface mineralization



Consultations with First Nations



Conduct Metallurgical testing



Resource estimate, test deposit at depth

Technical Leadership



Frank Basa, P.Eng., President and CEO

A veteran metallurgical engineer and mill expert with 40 years of experience. He recognized the critical metals' significance, acquiring properties in Ontario and Quebec. Frank has extensive battery metals expertise, including work with Agnico Eagle, and he originated and subsequently refined and further developed a proprietary process for Ni and Co sulphates for battery manufacturing.

LAURENTIA



EXPLORATION

Geological Expertise

Laurentia Exploration is a full-service geological consultancy offering exploration design, drill program management, 3D modelling, technical reporting, and camp logistics from its base near the Graal deposit. Their client roster includes KoBold Metals Amex Exploration, First Phosphate, BMEX Gold, Delta Resources, Genius Metals, and several other active Quebec explorers.

François Vézina, P.Eng., MBA
Director

François Vézina is a mining engineer with over 25 years of experience in the design, construction, and commissioning of major Canadian mining projects. He currently serves as COO of the Dumont Nickel Project and Chairman of Le Groupe MISA, a centre of excellence in mining innovation.



Aurelian Basa
Director

Aurelian Basa has spent over a decade in the critical metals sector, leading commercial development, feed sourcing, government and First Nations engagement, and investor relations.

Daniel Barrette
Director

Daniel Barrette brings over 15 years of experience in mining management and corporate restructuring, having led the reorganization, major financings and developed mining properties in the DRC through his extensive local network.

Yannick Benoit, J.D., LL.M
Director

Yannick Benoit is a corporate and commercial lawyer whose practice spans mining, forestry, and natural resource transactions.

Heidi Gutte, CPA
CFO and Director

Heidi Gutte is a Chartered Professional Accountant with over 15 years of experience in corporate finance, IFRS reporting, audit, and compliance for publicly traded exploration and mining companies.

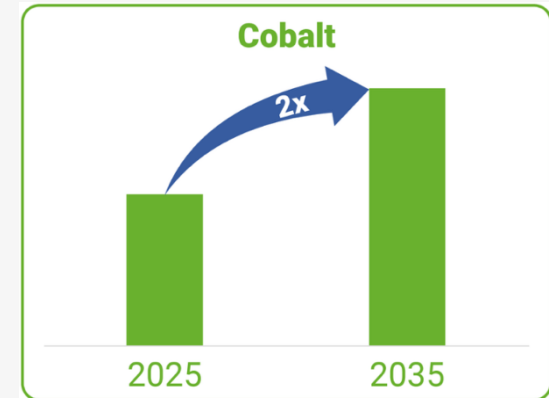
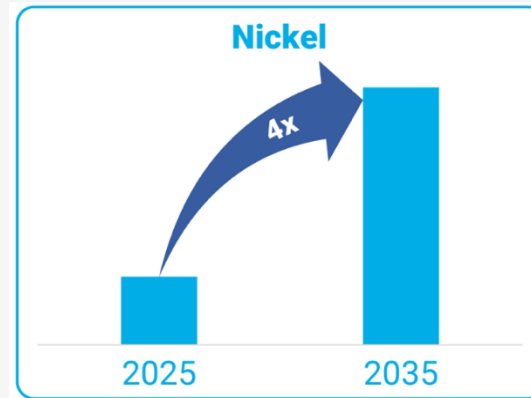
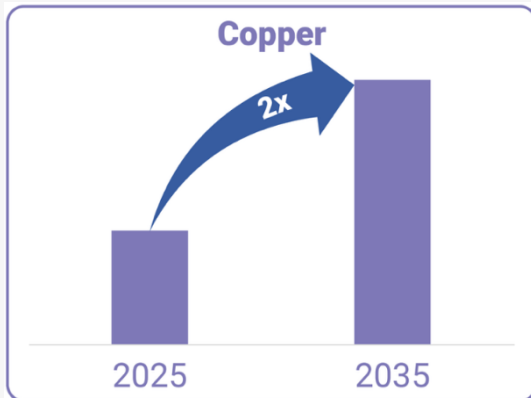
Reasons to Invest

- **Tightening Copper Market:** ~US\$5.95/lb (+28% YoY); JPM 330 kt deficit; BloombergNEF structural shortfall to 2045
- **Supply Under Pressure:** Grasberg force majeure, Chile acid disruptions, declining ore grades; new mines avg. 17+ yrs to production
- **High-Grade Polymetallic Geology:** Massive-sulphide Ni-Cu + Co/Pt/Pd across 3 zones; intersections 28.9 m, 50–100 m depth
- **Tier-1 Infrastructure:** Road, clean hydro, deep-water port; among lowest-carbon mining jurisdictions globally
- **Scale & Open-Pit Potential:** 14,837 ha with near-surface mineralization; low-cost bulk-tonnage open-pit economics



Increasing **Government Support** Including Improved Funding and **Grants**

Move Towards Supply Chain **Reshoring** to **De-Risk** Critical Mineral Supply chains





TSXV: COS

Frank J. Basa, P. Eng.

President & CEO
frank@coniagas.com
416-625-2342

Wayne Cheveldayoff

Corporate Communications
wayne@coniagas.com
416-710-2410